



## Registration

The participation is by the invitation and registration by the concerned NGEs & public organisations. There is no registration fee for participation.

Reg Link – [https://www.inspace.gov.in/inspace?id=vedas\\_webinar](https://www.inspace.gov.in/inspace?id=vedas_webinar)

Last Date for Registration – March 24 2025

## Why Should You Attend?

The VEDAS API Centre provides a unique opportunity for companies involved in developing applications and value-added services based on remote sensing data.

Key features include:

- Seamless Data Access: Instant access to a wide range of EO datasets via self-service APIs.
- Access to most recent and historical satellite imagery and products.
- Advanced Analytical Capabilities: Change detection, Temporal Analysis & AI enhanced products and services.
- Tech-Transfer & Hosting Options: Flexibility to self-host solutions for large-scale operations.



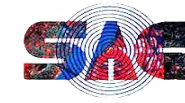
## Agenda

14:00-14:05 Hrs	Welcome	Shri Brijesh Kumar Soni DD, PD, IN-SPACE
14:05-14:15 Hrs	Opening Remarks	Shri Nilesh Desai Director, SAC
14:15-14:25 Hrs	Opening Remarks	Dr. Vinod Kumar Director, PD, IN-SPACE
14:25-14:45 Hrs	About Workshop	Dr. Rashmi Sharma DD, EPSA, SAC
14.45-15.30 Hrs	Demo of VEDAS	Shri Shashikant A Sharma GD, GAWG/EPESA, SAC
15.30-16.15 Hrs	Demo of API-Centre	Shri Pankaj Bodani Head VWAD/GAWG/EPESA
16.15-16.45 Hrs	Discussions and QA	VEDAS Team
16:45-16:50 Hrs	Vote of Thanks	

## Contact Information

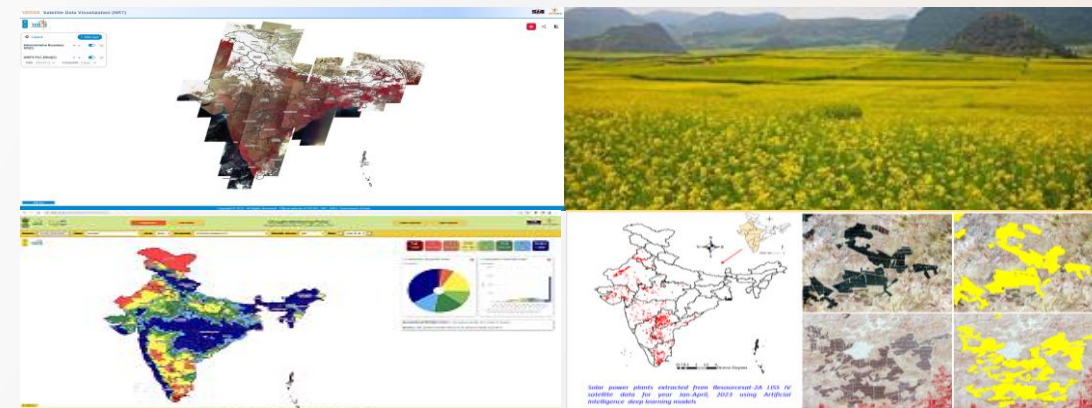
Shri. Shashikant Sharma  
Scientist-G and Group Director  
Email:[sasharma@sac.isro.gov.in](mailto:sasharma@sac.isro.gov.in)

Shri. Brijesh Kumar Soni  
Deputy Director, PD, IN-SPACE  
Email:[brijesh.ksoni@inspace.gov.in](mailto:brijesh.ksoni@inspace.gov.in)



A  
online workshop  
on

## VEDAS API Centre: An advanced self-service geospatial platform



Organized by

**Indian National Space Promotion and Authorization Centre (IN-SPACE)**

**Dept. of Space, Govt. of India**

&

**Space Application Centre (SAC)**

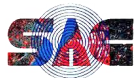
**Indian Space Research Organization (ISRO)**

**Dept. of Space, Govt. of India**

**March 26, 2025**



<https://vedas.sac.gov.in/en/>



# APIs available through VEDAS API Centre

## About VEDAS

**VEDAS (Visualization of Earth observation Data and Archival System)** is an advanced geospatial platform developed by ISRO's Space Applications Centre (SAC). It offers a comprehensive suite of tools and services for **data visualization and analysis**, leveraging Indian Earth observation (EO) data **to support research, decision-making**, and operational applications.

The platform enables users to **explore diverse thematic content** across sectors such as **agriculture, forestry, desertification, wetlands, cryosphere, urban development, and air quality monitoring**. VEDAS provides a unique opportunity to **bridge the gap** between **data generators** and **analysts**, fostering innovation in geospatial applications and empowering users with valuable insights.

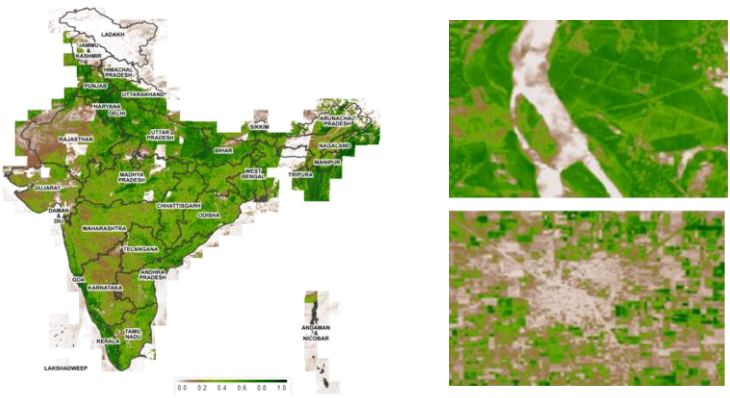
## VEDAS API Centre

The **VEDAS API Centre** is an advanced self-service geospatial platform developed by ISRO's Space Applications Centre (SAC). It offers a comprehensive **suite of APIs and tools for data visualization and analysis**, enabling industry users **to harness EO data for research, decision-making**, and operational applications.

The platform allows **users to explore and integrate geospatial insights** across sectors such as **agriculture, forestry, desertification, wetlands, cryosphere, urban development, and air quality monitoring**. VEDAS API Centre provides a unique opportunity to streamline data access and foster innovation in geospatial applications, empowering users with actionable insights.

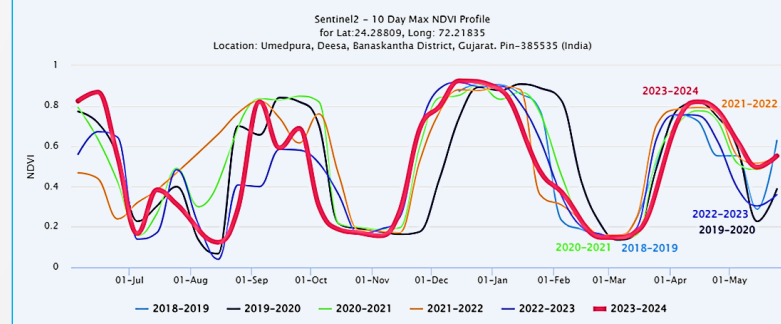
## Web Map API

- False Color Composite (FCC) for AWIFS & Sentinel-2 and True Color Composite (TCC) for Sentinel-2.
- Temporal composites for customized mosaics.
- Popular geospatial indices such as NDVI, EVI, NDWI, MNDWI, SAVI, NBR, ARVI, BUI, NDSI, CI.
- Difference Maps for change analysis.
- AI-Based mask such as cloud mask or cloud shadow masks for enhanced image analysis.



## Temporal API

- Provides temporal profiles of values through JSON API for a particular point or polygon area of interest (AOI).
- Offering statistics such as: Mean, minimum, maximum, and standard deviation for polygon AOIs.
- Direct time-series values for point locations.
- Temporal profiles available for both reflectance of individual bands and popular geospatial indices.
- AI-Based Cloud and Cloud Shadow Flags for improved data accuracy and reliability.



## Advantages

- Faster Time-to-Market
- Cost Efficiency
- Improved Operational Efficiency
- Reliable Insights for Business Growth
- User-Friendly Access
- Innovation Opportunities
- Up-to-Date Insights

## API Centre Key Features

- Self-Service Registration
- Defined API Access
- Managed Keys
- Samples and Documentation