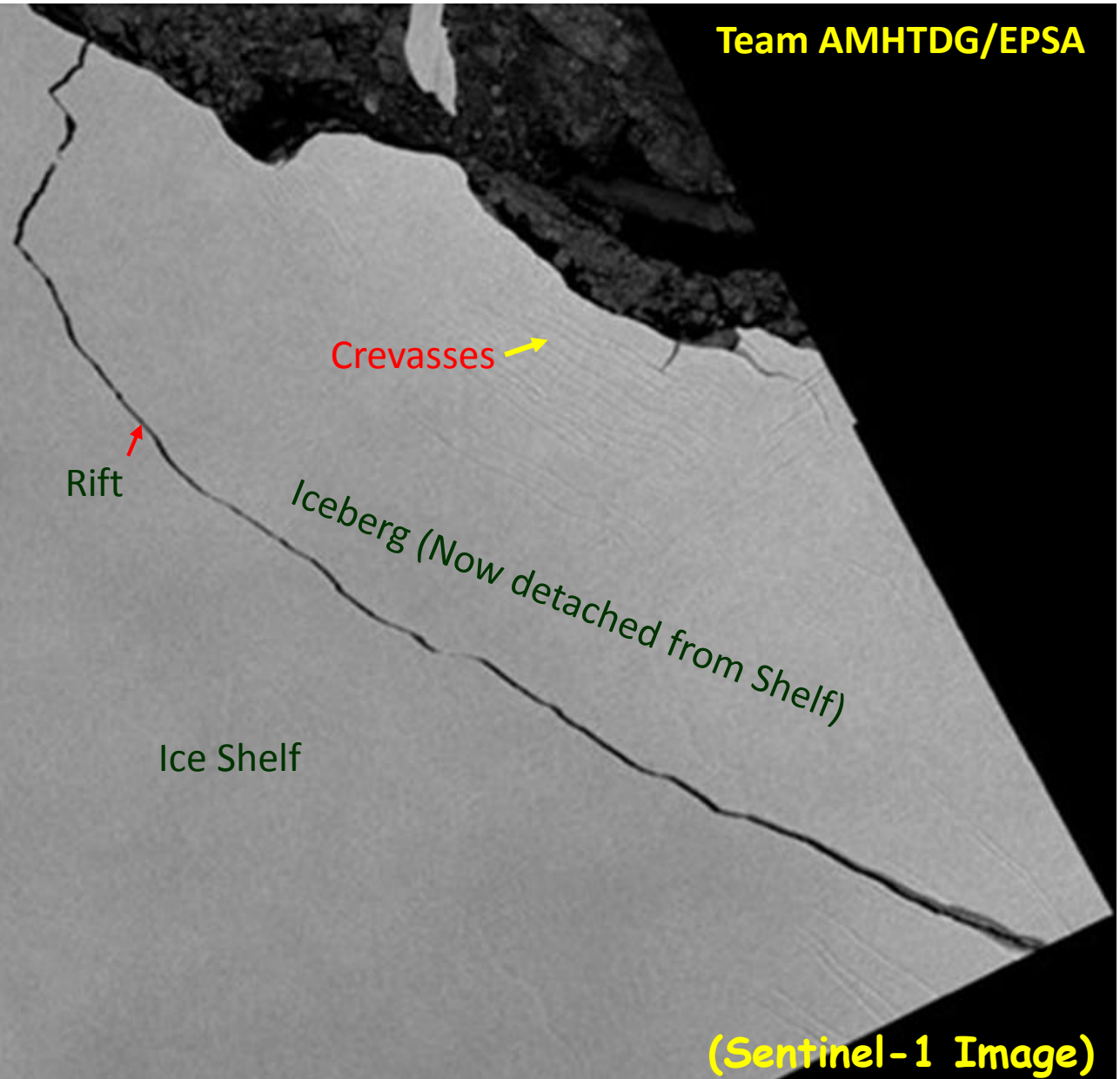


Larsen C Rift Propagation and Calving as Seen on 12th JULY 2017

Rift propagation and ice calving of Larsen C Ice Shelf. Calving of ice took place between July 10th and 12th. AMHTDG Team was watching the event closely. Ice disintegration was of the order of ~ 6200 km² out of ~ 50000 km². The event presently will not raise the sea level, but the instability of the shelf and increased ice flow from Ice Sheet may altogether change the scenario.

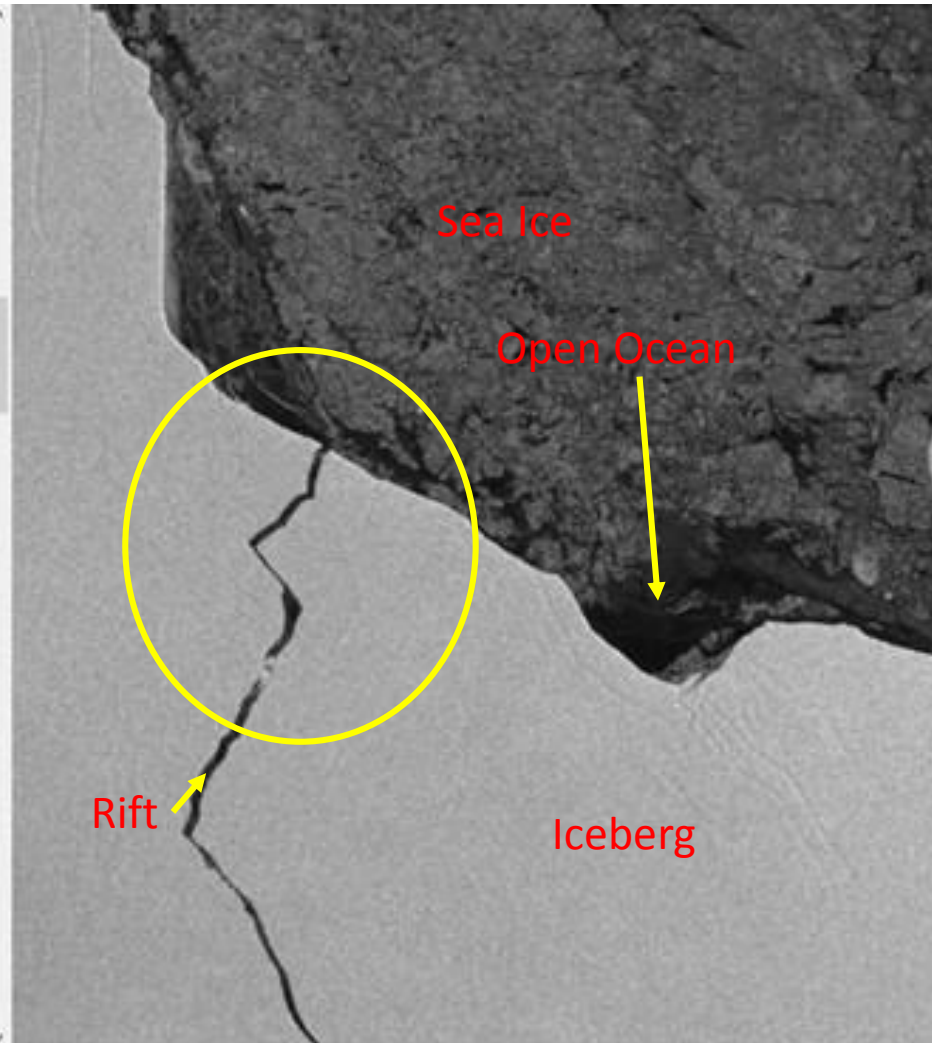
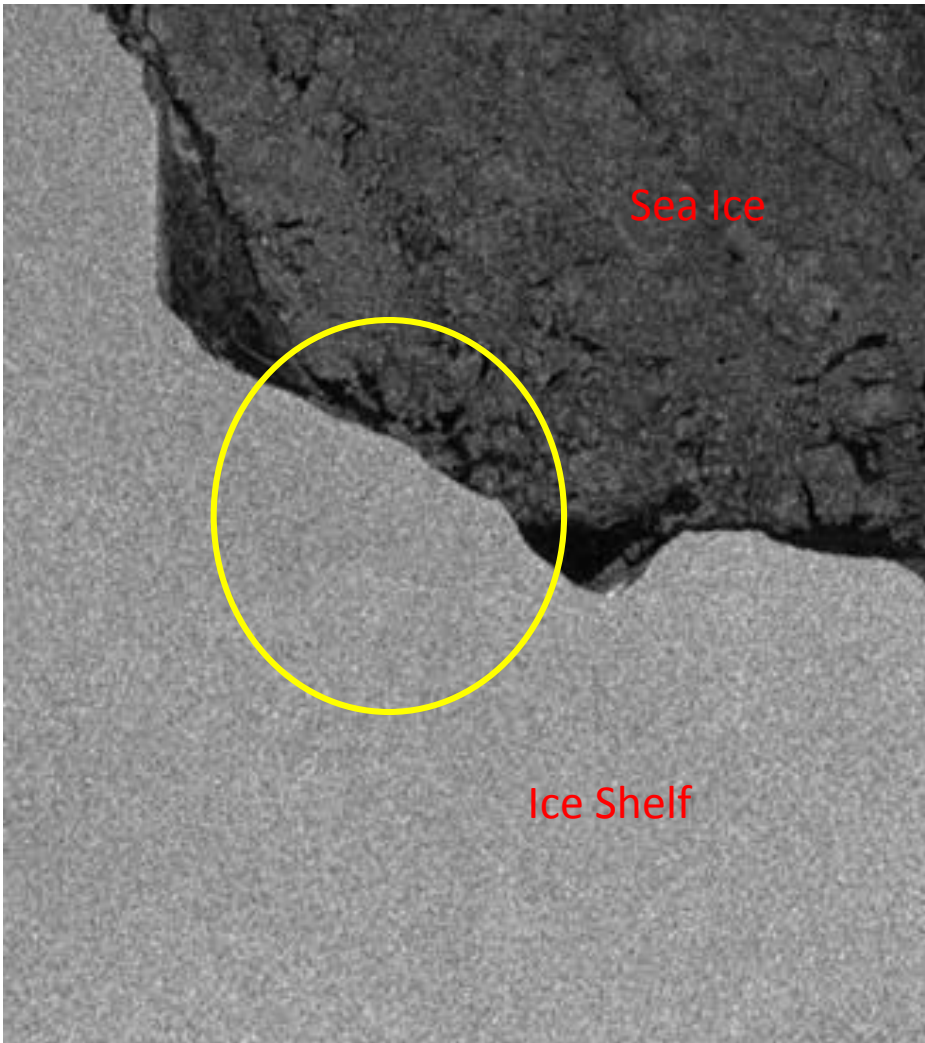
Team AMHTDG/EPISA



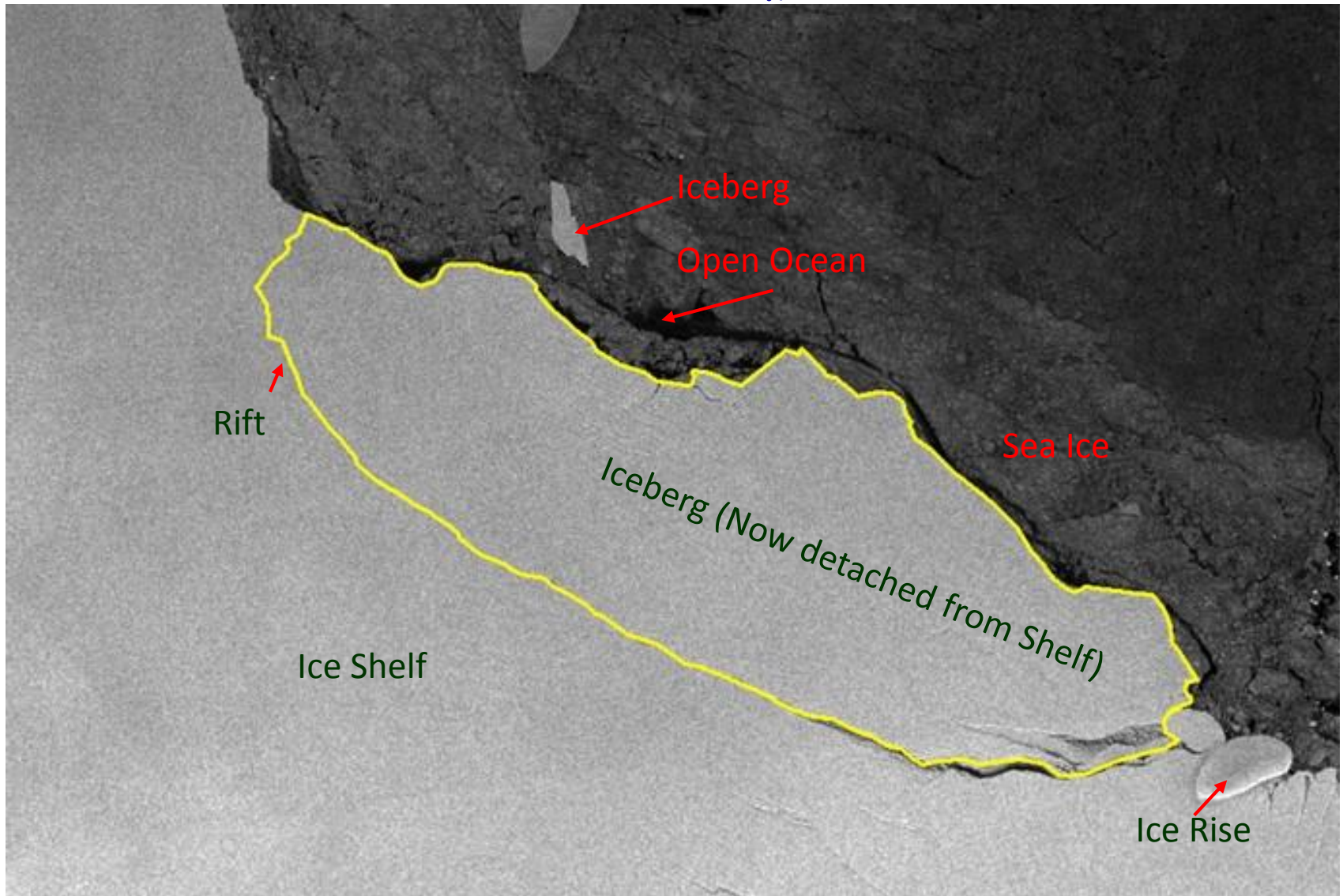
(Sentinel-1 Image)

Multi Sensor Requirement for Exact Event Monitoring

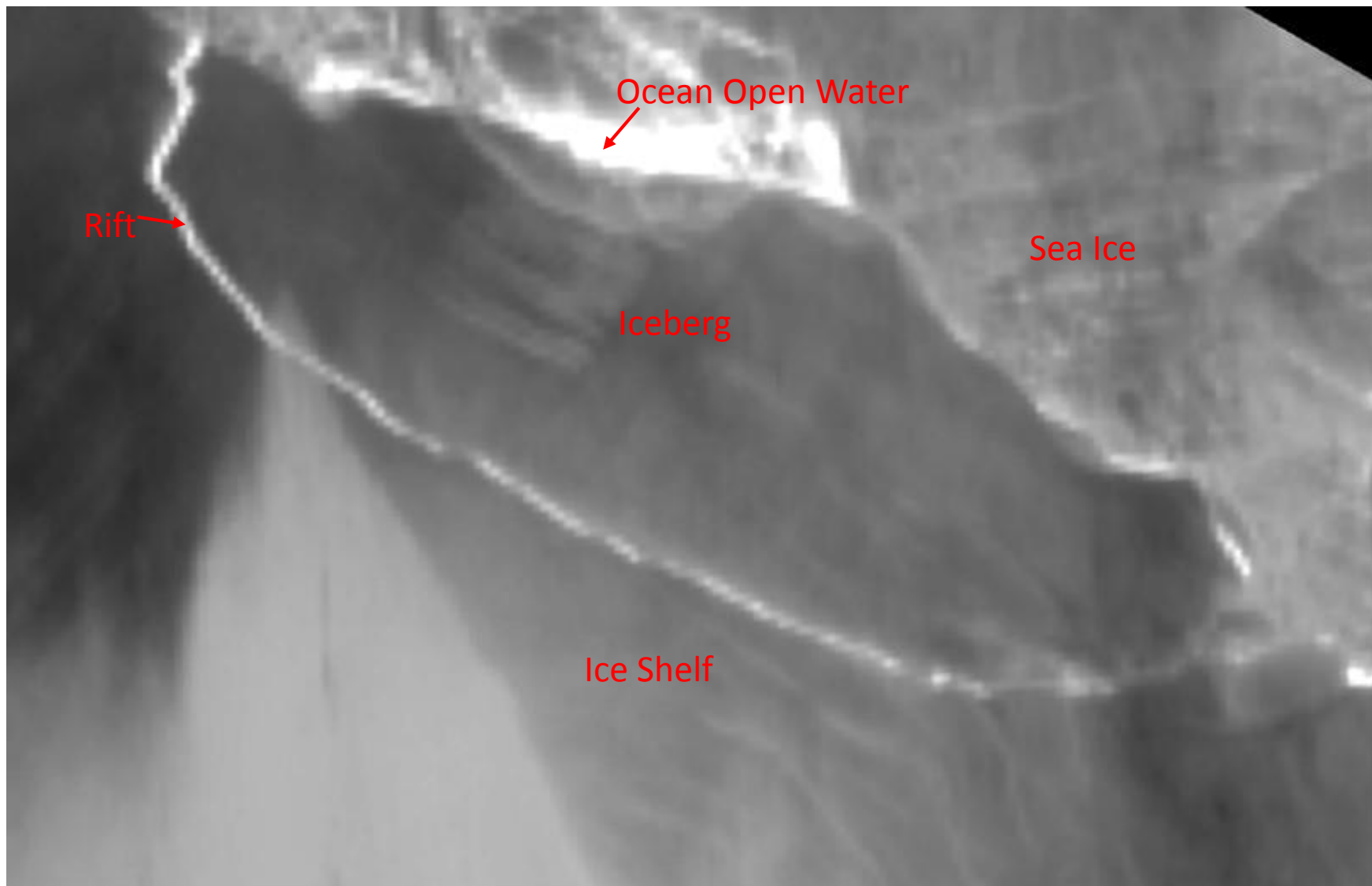
July 10, 2017 Sentinel-1 Image July 12, 2017



Larsen C Rift and Ice Calving: ~ 6200 km² out of ~ 50000 km²



MODIS Thermal Image: 12th July 2017



Team AMHTDG/EPSA

Courtesy: (<https://scihub.copernicus.eu/dhus/data>); (<https://nsidc.org/data/iceshelves-images/>)